

BUS VISION™

A Product of Digital Security Vision

NEW!



COMPACT SURVEILLANCE FOR SCHOOLBUS APPLICATIONS

Schoolbus environments can often prove harsh for electronic equipment, with exposure to repetitive shocks and vibration proving too much for some systems.

Specifically designed for Schoolbus applications and encased in a ruggedised metal chassis, the BusVision model 740 can withstand this tough environment to provide uninterrupted surveillance

Small, light and robust, the BusVision 740 is ideal in space restricted situations where the application demands resilience from the product.

The BusVision 740 digital recorder can provide a long, trouble free service in high vibration environments making it one of the most powerful transit surveillance tools available today.

FEATURES

- ▶ Developed specifically for schoolbus applications
- ▶ Simultaneous MPEG-4 and JPEG transmission and recording
- ▶ Ruggedised design with aerospace shocks
- ▶ MultiMode Recording - Dynamically-switchable resolution, record-rate & compression (MPEG4/JPEG) per camera
- ▶ 30pps and 120pps model variants available
- ▶ Intelligent power management based on ignition and supply voltage sense
- ▶ Two audio inputs, Three alarm inputs
- ▶ Storage on HDD, Compact Flash or SD Card (specified at time of order)
- ▶ HDD versions come with anti-vibration mounts as standard
- ▶ Rugged, environmentally robust housing and connector
- ▶ Monitor output provides spot or main monitor functionality

BUS VISION™

A Product of Digital Security Vision

RUGGED DESIGN

Designed to conform to ETSI 5M2 (road) and EN 61371 (rail) standards with a heavy duty steel enclosure and aerospace grade suspension bushings, the BusVision 740 can withstand exposure to the vibration and shock that is typical of road and rail transportation.

In addition, the use of a single, rugged, automotive connector provides excellent protection for the various inputs and allows quick and easy removal / installation.

POWER MANAGEMENT

The power management facility stops the unit recording and closes down operation after a user defined period has elapsed from the vehicle ignition being turned off. The unit will also carry out a controlled and timed power down sequence when the vehicle voltage has fallen below a user set level.

Multi Mode RECORDING

MultiMode recording gives you the ability to set different record rates, resolutions and compression algorithms across scheduled, normal and alarm modes. MultiMode Recording profiles can be set per unit, giving you the flexibility to adjust resolution (QCIF to 4CIF), record rates and compression settings (MPEG-4/JPEG) dynamically on individual cameras and across the whole unit.

CAMERAS

8 channel camera options
75 ohm termination,
Composite 1V peak to peak,
Color or monochrome.
PAL or NTSC software selectable.

RECORD RATE

Frames per second 30fps (NTSC)

COMPRESSION

MJPEG & MPEG-4 formats at 4CIF, 2CIF, CIF & QCIF resolution.
User definable file compression size.

AUDIO

2 channels line level.
Range - 50mV to 1.5V RMS
Software adjustable gain and AGC (Automatic Gain Control)

ALARMS

3 analog inputs with EOL detection capability.

RELAY OUTPUTS

Solid state relay providing polarized volt free contacts.
Rated up to 60V and 700mA.

CONNECTIONS

Serial Ports ... 4x 9 way (Male) D Type RS 232 ports
Ethernet ... 10/100Base T connection
FTP and Telnet access

CONNECTIONS

Ethernet - 10BASE-T and 100BASE-T

POWER

Supply voltage 10 to 30 volts dc.
Power consumption excluding HDD 7.5W.

TEMPERATURE RANGE

Disk Drive (HDD) +5 to +55C
Disk Drive (Solid State) -20 to +70C

DIMENSIONS

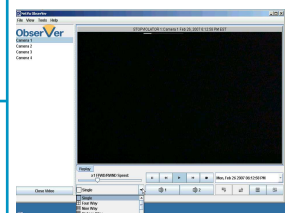
Excluding mounting hardware
7 x 4.3 x 2.4 inches
2.5 Lbs (includes HDD)

Including mounting hardware

8.3 x 4.7 x 2.4 inches
3.3 Lbs

MONITOR OUTPUT

single composite video output showing live or recorded images.



BusVision - www.busvision.com

5500 Peachtree pkwy STE 200
Norcross GA, 30092
Office 800 372 8474 Fax 678 966 3002