



# TransVu

## *Installation Manual*



## **Purpose and Scope**

The TransVu video server is based on the DVIP video server.

Basic operation of the machine is completely covered in the Webpages Operation Manual.

Extra features provided by TransVu are covered in the TransVu Operation Manual.

Cabling and wiring examples are covered in the TransVu Cabling Manual.

This document details the hardware installation.

## Table of Contents

Release Version Information.....	2
Purpose and Scope.....	3
Company and Product Information.....	5
<b>Installation.....</b>	<b>6</b>
Preferred drive orientation.....	6
Installation space required for the TransVu.....	6
<i>Care in feeding cables.....</i>	<i>7</i>
<i>Notes on installation space.....</i>	<i>8</i>
Mounting the Baseplate.....	9
<i>Mounting restriction for correct G-force implementation.....</i>	<i>9</i>
<i>Baseplate dimensions &amp; measurements:.....</i>	<i>9</i>
<i>TransVu top view dimensions.....</i>	<i>10</i>
<i>TransVu end view dimensions:.....</i>	<i>11</i>
Fitting shock absorbers to the unit.....	12
<i>Side view of the completed assembly:.....</i>	<i>12</i>
Fitting the TransVu to the baseplate.....	13
<i>Cable clamp on the baseplate.....</i>	<i>14</i>

## Company and Product Information

### Disclosure to Third Parties

This document may not be copied to, given to, copied by, or discussed with any third party other than Dedicated Micros without first obtaining the express permission in writing from Dedicated Micros.

All reasonable steps have been taken to ensure that this publication is correct and complete, but should any user be in doubt about any detail, clarification may be sought from Dedicated Micros, or their accredited representative. The information in this document is subject to change without notice and should not be construed as a commitment by Dedicated Micros. Dedicated Micros accepts no responsibility for any errors that may appear in this document

### Regional Contacts

#### DEDICATED MICROS UK

**Customer Services:**

Tel: + 44 161 727 3244

Fax: + 44 161 727 3346

e-mail: [customerservices@dmicros.com](mailto:customerservices@dmicros.com)**Technical Support:**

Tel: + 44 161 727 3243

Fax: + 44 161 727 3346

e-mail: [uksupport@dmicros.com](mailto:uksupport@dmicros.com)

#### DEDICATED MICROS USA

**Customer Services:**

Tel: + 1 800 864 7539 ext. 2000

Fax: + 1 703 904 7743

e-mail: [customerservices@dmicros.com](mailto:customerservices@dmicros.com)**Technical Support:**

Tel: + 1 800 864 7539 ext. 2001

Fax: + 1 703 904 7743

e-mail: [ussupport@dmicros.com](mailto:ussupport@dmicros.com)

#### DEDICATED MICROS ASIA

**Customer Services/Technical Support:**

Tel +65 6285 8982

Fax +65 6285 8646

e-mail: [asiastsupport@dmicros.com](mailto:asiastsupport@dmicros.com)

#### DEDICATED MICROS AUSTRALIA

**Customer Services:**

Tel: +612 9634 4211

Fax: +612 9634 4811

e-mail: [mromer@dmicros.com](mailto:mromer@dmicros.com)**Technical Support:**e-mail: [aussupport@dmicros.com](mailto:aussupport@dmicros.com)

#### DEDICATED MICROS EUROPE

**Customer Services:**

Tel: + 49 243 352 580

Fax: + 49 243 352 5810

e-mail: [infobox@dmicros.com](mailto:infobox@dmicros.com)**Technical Support:**

Tel: + 49 243 3525 826

Fax: + 49 243 3525 820

e-mail: [eusupport@dmicros.com](mailto:eusupport@dmicros.com)

#### DEDICATED MICROS MALTA

**Customer Services:**

Tel: + 356 2148 3673/4

Fax: + 356 2144 9170

#### DEDICATED MICROS MIDDLE EAST & AFRICA

**Customer Services:**

Tel: + 971 (4) 390 1015

Fax: + 971 (4) 390 8655

Mobile: + 971 (50) 4500 149

e-mail: [Sldris@dmicros.com](mailto:Sldris@dmicros.com)**Technical Support:**e-mail: [support@dmicros.com](mailto:support@dmicros.com)

# Installation

## Preferred drive orientation

The hard disk drive is mounted horizontally in the unit with the head swing least affected by acceleration forces when the multipole plug is facing the front or rear of the vehicle.

## Installation space required for the TransVu

The TransVu is fixed to the vehicle via a mounting plate.

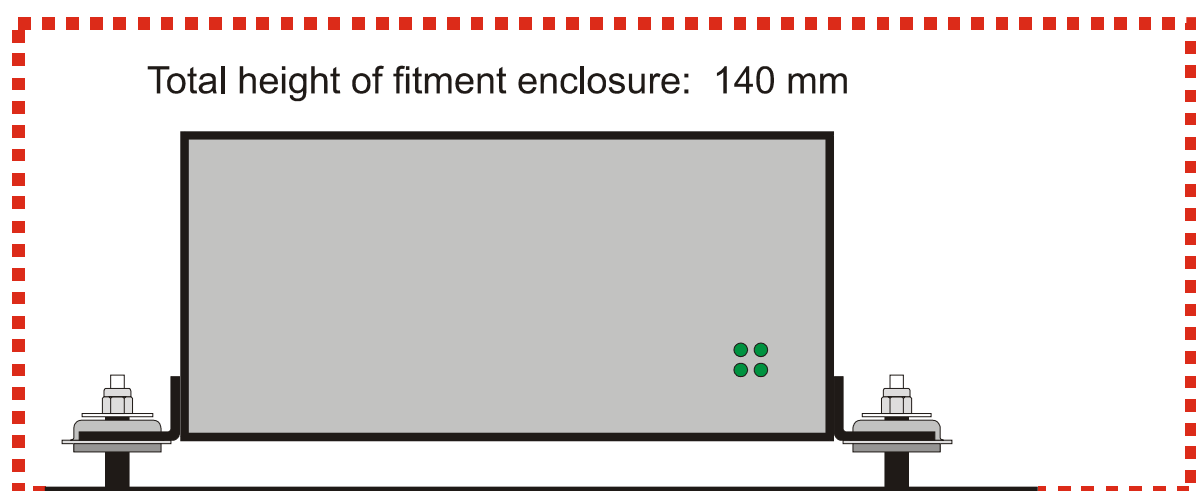
It should be mounted horizontally within the vehicle.

It should be mounted on a secure base free from resonance and secondary vibrations.

The TransVu is fixed to the mounting plate via four shock absorbing fixings.

This allows the vehicle vibrations to be dramatically reduced and the TransVu to operate in harsh shock environments.

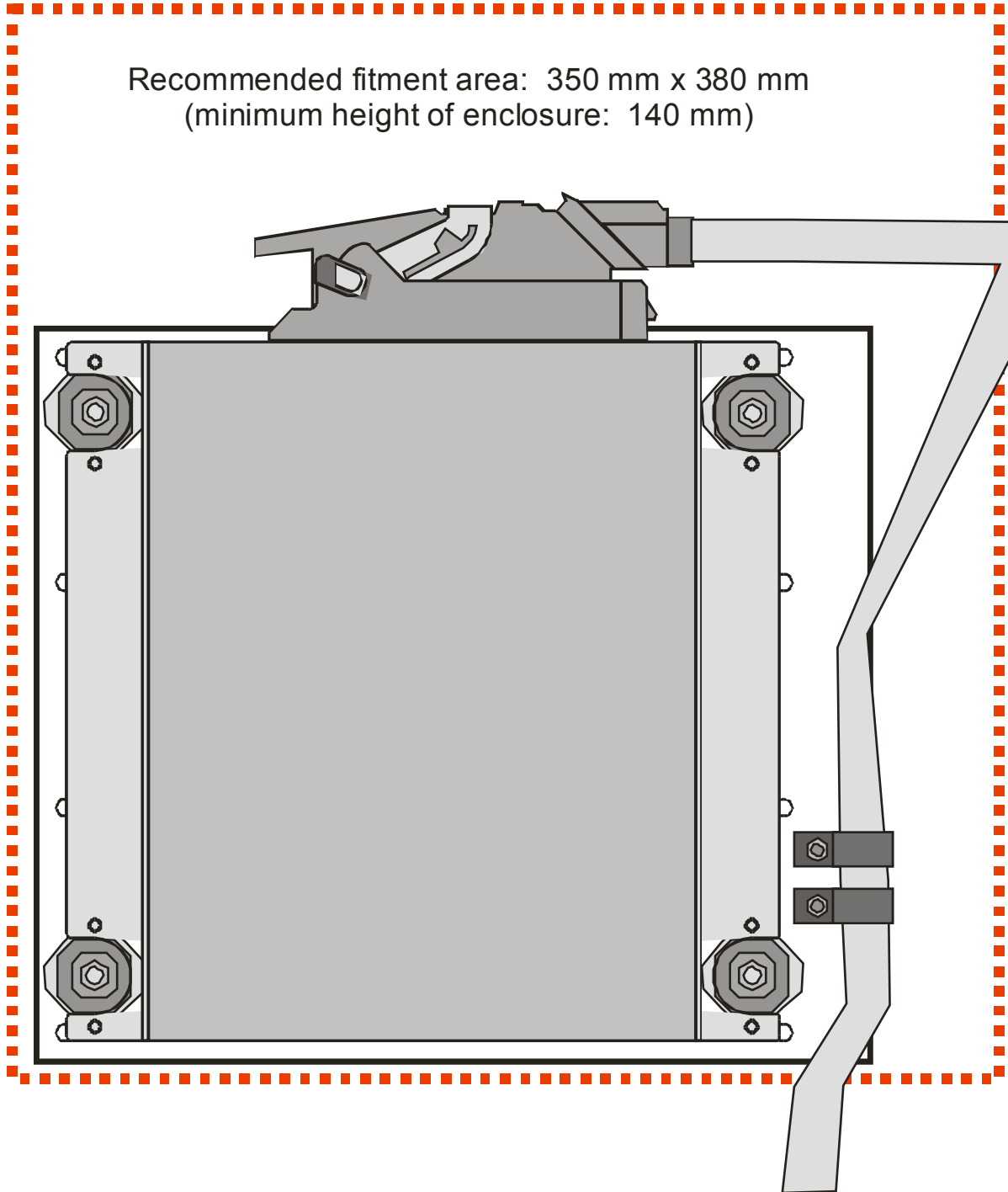
Vibration will cause movement of the TransVu on the shock mounts and therefore a reasonable clearance must be allowed around the unit. A suggested fitment area of 350mm x 380mm x 140mm (13<sup>3</sup>/<sub>4</sub>" x 15" x 5<sup>1</sup>/<sub>2</sub>" ) is recommended.



***Care in feeding cables***

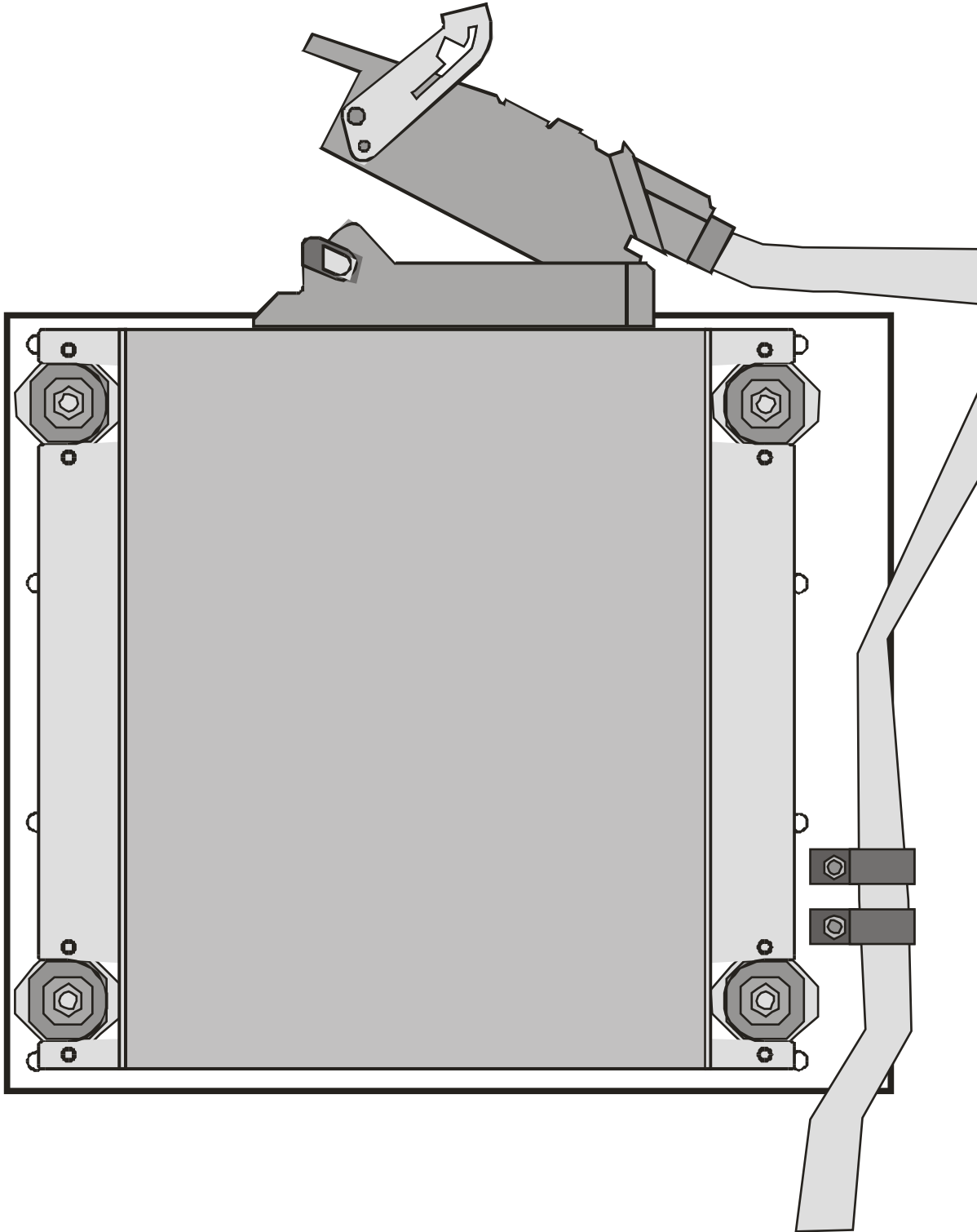
The cables feeding the multipole plug should be fed to the unit taking care that no vibration can be transmitted along them by virtue of their contact with the vehicle chassis close to the unit. Cable clamp posts are provided on the baseplate.

Recommended fitment area: 350 mm x 380 mm  
(minimum height of enclosure: 140 mm)



**Notes on installation space**

Extra space is required around the plug itself to allow the unit to be easily disconnected from the cable.



## Mounting the Baseplate

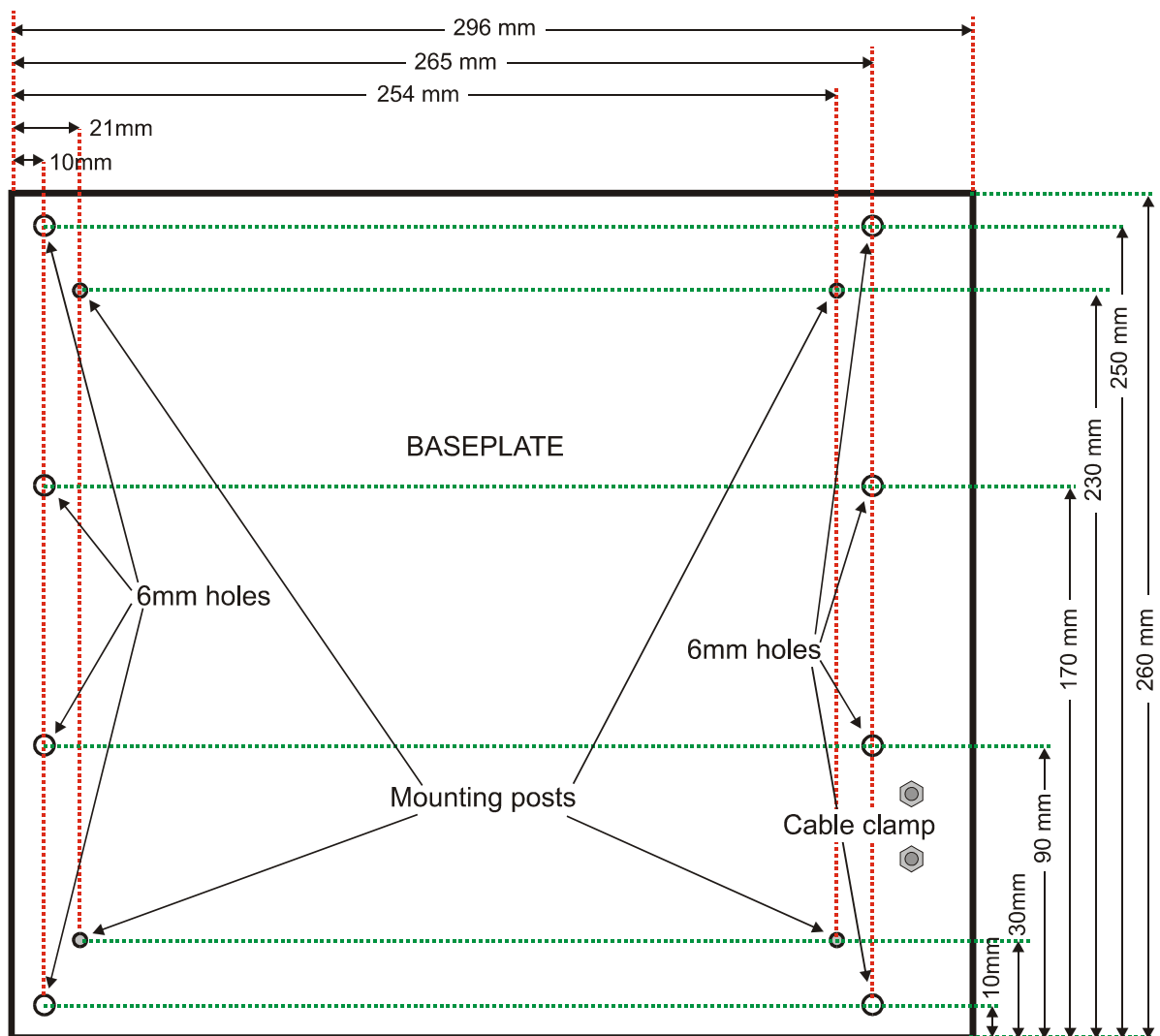
The baseplate should be secured to the vehicle using nuts and bolts with shakeproof washers.

The baseplate should be mounted horizontally.

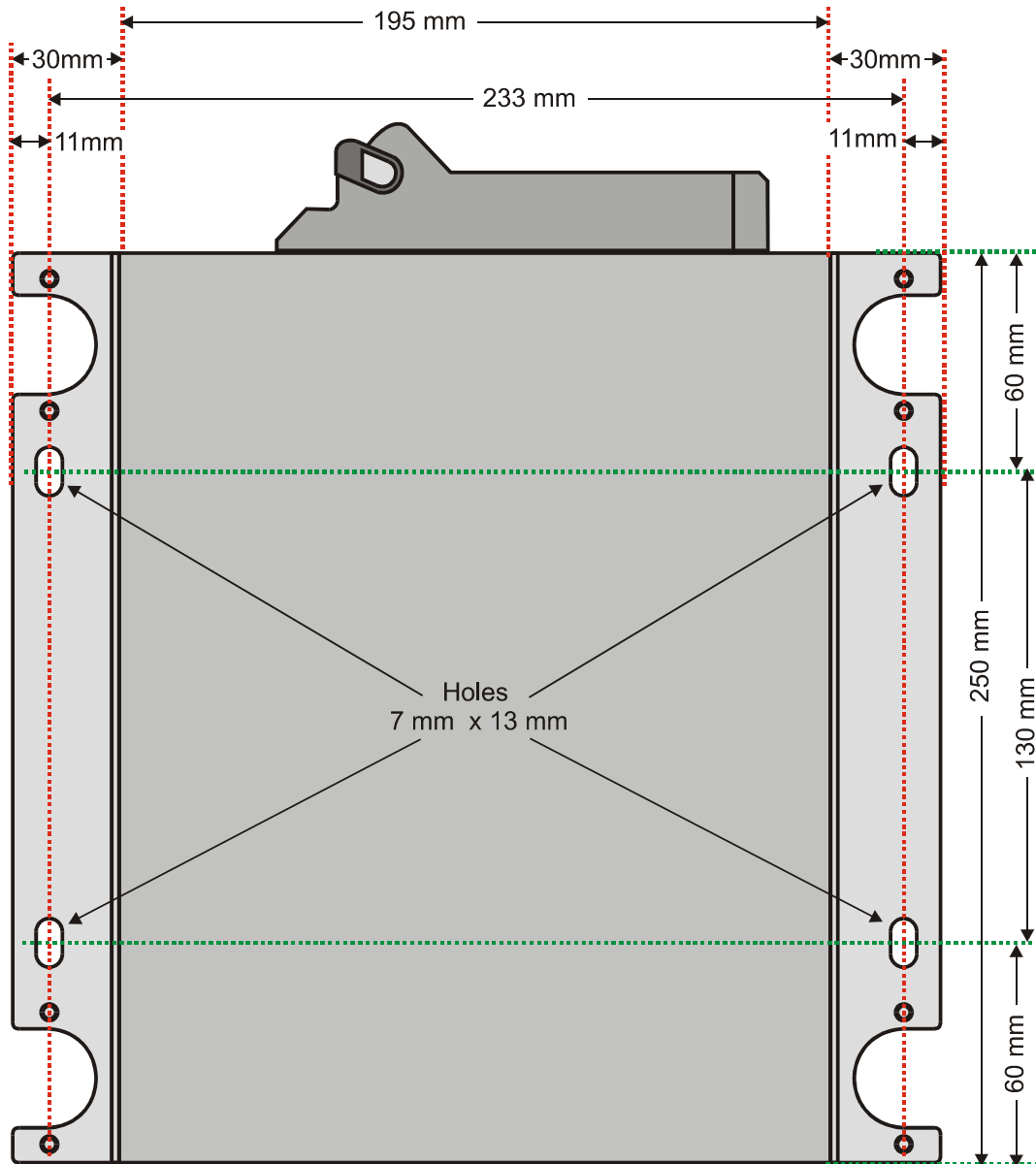
### Mounting restriction for correct G-force implementation

If the G force detectors are fitted in the unit the baseplate must be correctly orientated within the vehicle.

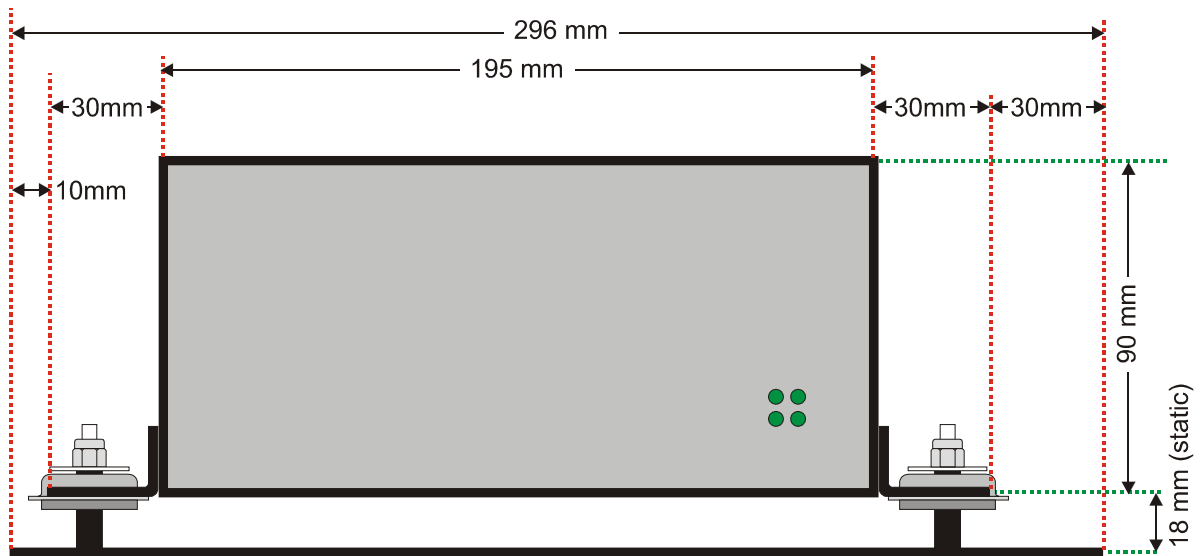
### Baseplate dimensions & measurements:



**TransVu top view dimensions**



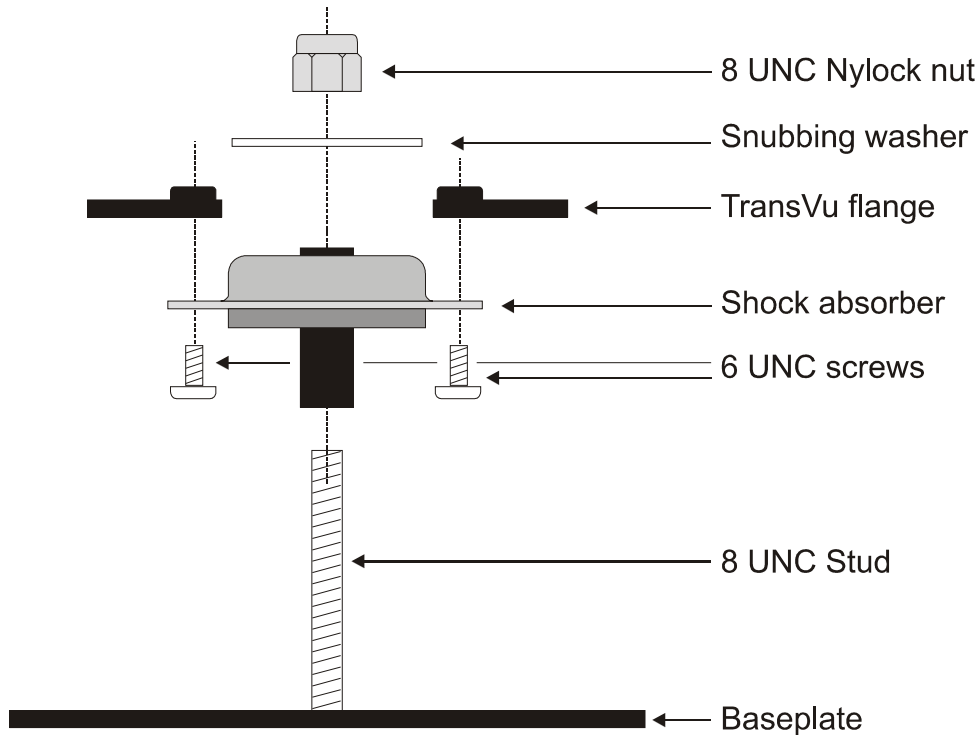
Note: Early metalwork (without the diamond fixings) used smaller flange mounts for the bolt fixing suspension. The 7 x 13mm (0.3 x 0.5 in) fixing holes were aligned on a 145mm x 215mm (5.7in x 8.47in) square relative to the centre of the unit.

**TransVu end view dimensions:**

Note: The measurement from the baseplate to the base of the TransVu is a measured 18mm ( $\frac{3}{4}$  inch) when the assembly is static. If the assembly is subject to vibration this measurement will alter dynamically.

## Fitting shock absorbers to the unit.

This procedure to mount the shock absorbers to the TransVu must be adhered to:



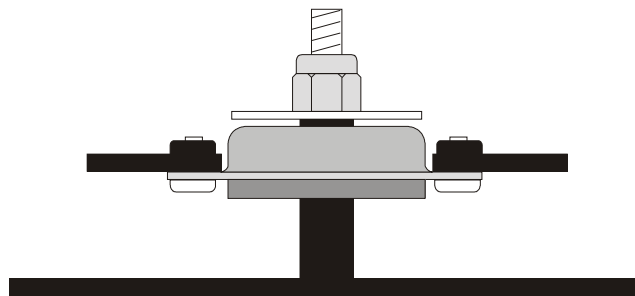
Fix each of the four shock absorbers to the TransVu base from underneath using two 6 UNC screws provided. These must be fixed using loctite on the screw threads.

Lower the TransVu and mounted shock absorbers onto the baseplate. (See section "Fitting the TransVu to the Baseplate".)

Put a snubbing washer on each of the four studs on top of the shock absorbers.

Fix the TransVu in place by using four 8 UNC Nylock nuts.

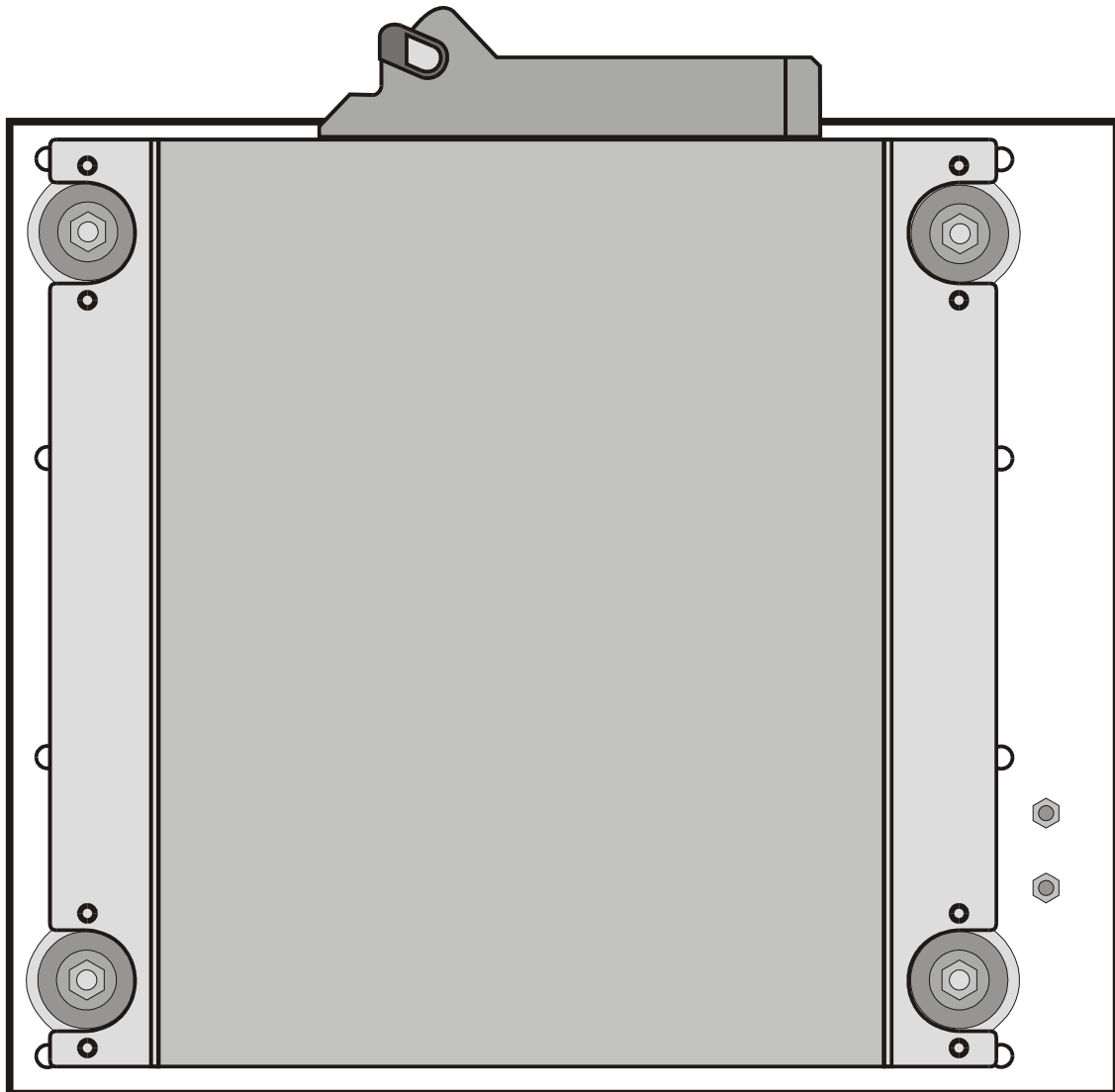
### **Side view of the completed assembly:**



## Fitting the TransVu to the baseplate

Observe the correct orientation of the TransVu on the baseplate.

The Transvu multipole socket being at the top and the cable clamp being on the right hand side.



***Cable clamp on the baseplate***

The cable clamp is provided to reduce vibration being transmitted from the cable loom through to the TransVu.

Care should be taken that no part of the cable loom after the clamp can come into contact with any part of the vehicle.

